



# WELL WATER HOLDING TANKS

**NEVER REPLACE AN ELECTRONIC LEVEL CONTROLLER**

## GENERAL INFORMATION:

There are major benefits to WaterLine Controls over its competitors. Designed and developed WaterLine Controls to last a lifetime with the user in mind. Backed by manufacturer's Lifetime Limited Warranty.\*

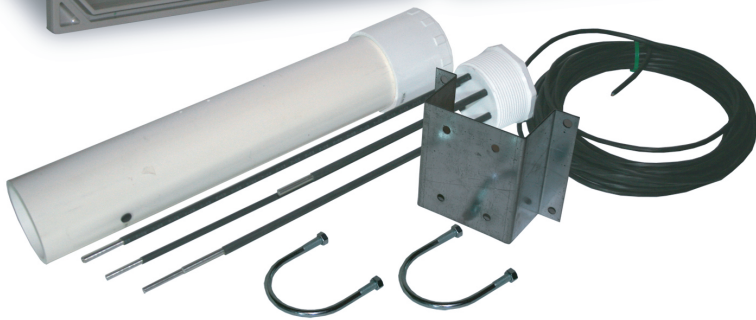
It is user-friendly with LED indicators to let the user know which functions it is performing and if there are any interruptions in the performance. It is produced in a modular construction for easy access to all components. WaterLine Controls fully integrates a set of dry contacts for each activation and deactivation of a function. There is a separate relay for each set point. Set points are accurate to 1/8". Optional floats and No high voltage in the wet area of the system.



## STAND ALONE SYSTEM WITH CONNECTIONS TO ANY BUILDING MANAGEMENT SYSTEM USING DRY CONTACTS

## APPLICATIONS

- Well Holding Tank.
- Designed for both initial installation and replacement of any brand. Multiple Family Well Systems.
- Custom designs available when needed.



STANDARD KIT

\* See Warranty for details

## COMMUNICATION WITH BUILDING MANAGEMENT

Dry contacts to tell operator remotely when:

- Power loss to the controls
- Low water
- Fill cycle ON and OFF
- Sensor wire shorted or cut.

## FEATURES

- Easy to install.
- Microprocessor controlled.
- Compensates for wave action.
- Easy-to-understand LED display.
- Modular Construction
- One-Step Internal Testing system for the electronics.
- Built for easy troubleshooting
- Dry contacts. integration

## PRODUCT SPECIFICATIONS

- Operates on 30 to 40VDC, 24 VAC, 110/220 VAC 50/60 Hz. Specify voltage required when ordering.
- Accurately manages levels to within 1/8" of operating range.
- Separate power relay for each function.
- Some models drive direct up to 5HP well pumps.
- Sensor wire should not be spliced. Standard Kit has 50 ft. length.
- Sensor wire available in: 50 ft., 100 ft., 150 ft., 200 ft., 250 ft., 300 ft. or longer lengths if needed.
- A 24VAC output transformer to operate a solenoid irrigation valve available as an option.

## SENSOR PROBES

Standard probe available with Extension Rod Kits. Float switches can be used (consult factory for wiring configuration)

### Installations:

- A licensed electrician can install the control box and sensors in less than one hour.
- Sensors attach to wall or mounts in an external static pipe or Sensor slips into a 3" female fitting.
- The sensor cable tank should be installed in a grounded metal conduit in order to prevent spurious signals from interfering with the sensor operation.

## MODELS

**PRODUCT FUNCTION TRUTH TABLE** The Blank spaces below mean "No Connection or Function"

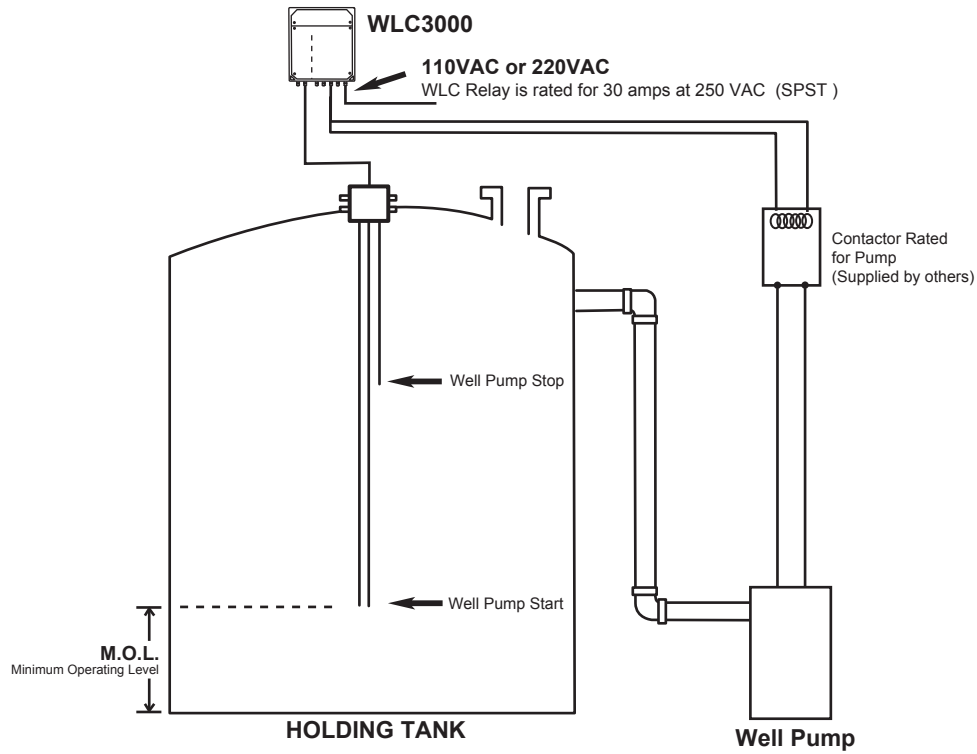
MODEL	BMS DRY CONTACTS					POWER RELAY		SELF TEST	5HP	24VAC
	FAULT	POWER LOSS	LOW ALARM	FILL	BAS WIRES	LOW ALARM	FILL			
WLC 3000	X	X		X	4		X	X		
WLC WS-3000	X	X		X	4		X	X	X	
WLC WST-3000	X	X		X	4		X	X		X
WLC 4500	X	X	X	X	6	X	X	X		
WLC WS-4500	X	X	X	X	6	X	X	X	X	
WLC WST-4500	X	X	X	X	6	X	X	X		X

Fill Height Only

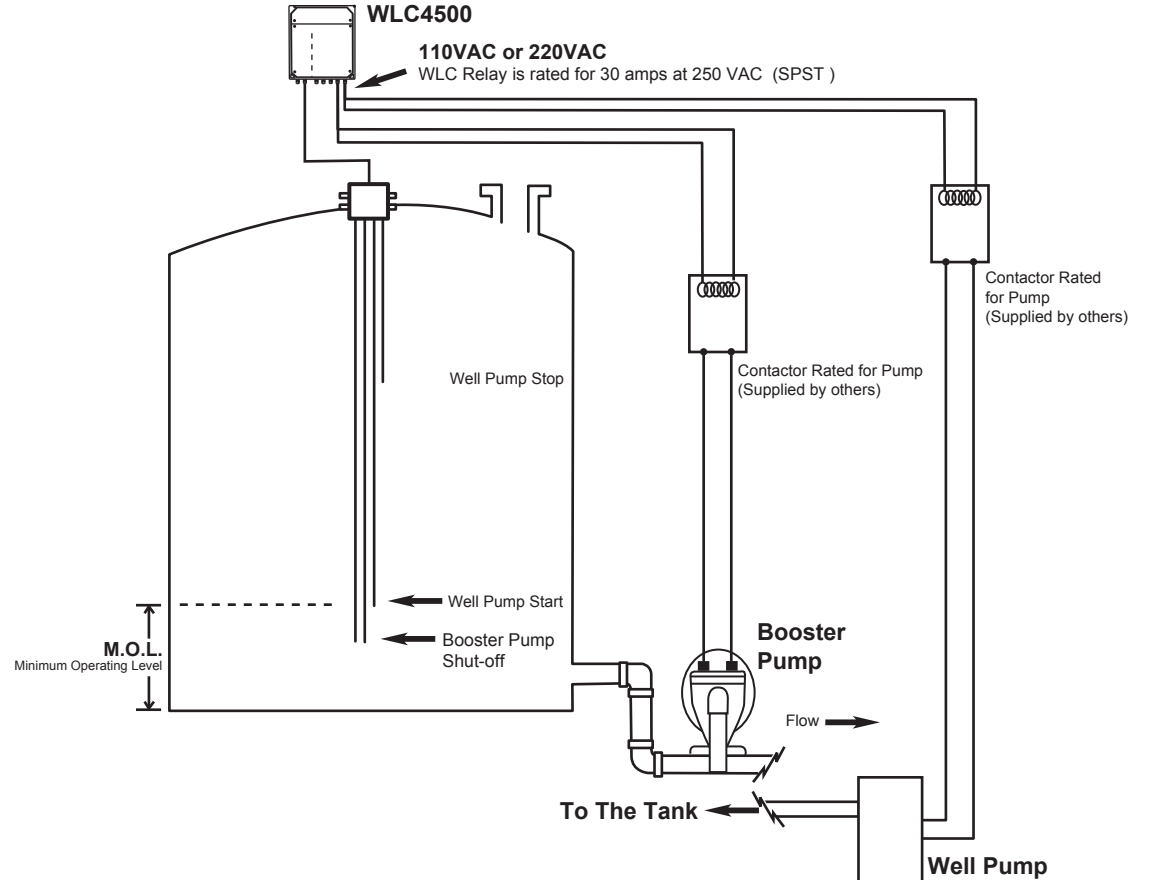
Fill Height with Low Level Alarm

# DIAGRAM FOR ALL MODELS

## SPECIFICATION FOR WLC3000



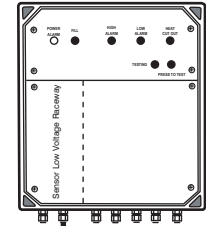
## SPECIFICATION FOR WLC4500 FILL WITH LOW LEVEL CUT-OFF



# OPTIONS

## Tank Installation For Sensors over 18"

WaterLine Controls



3" Slip Style Coupler  
 3" slip plug with gasket fits into a 3" Slip Style fitting.  
 3" Bulkhead Fitting

Fill Stop  
 Fill Start  
 Low Alarm

Equalizer Vent Hole

A  
 B

### EXTENSION KITS

PART #

- Ext. 3 = 3 each of 45.5" rods
- Ext. 4 = 4 each of 45.5" rods
- Ext. 5 = 5 each of 45.5" rods
- Ext. 6 = 6 each of 45.5" rods

Threaded 1/4-20 on both ends.

Internal Static Chamber

C

Cut to length in the field as required

